



INSPIRING THE NATIVE TRADITION OF GIVING

POTLATCH FUND

April 30, 2013

Save The Date

Wednesday, May 15



*Save The Date and Remember
to Support Potlatch Fund on
Wednesday, May 15!*

The Seattle Foundation's giveBIG is a one-day, online charitable giving event to inspire people to give generously to nonprofit organizations which make our region a healthier and more vital place to live.

Each credit card donation made to Potlatch Fund, via The Seattle Foundation's website, between midnight and midnight (PDT) on Wednesday, May 15, 2013, will receive a prorated portion of the matching funds (or "stretch") pool. The amount of the "stretch" depends on the size of the stretch pool and how much is raised in total donations on giveBIG day.

Use [this link](#), on **Wednesday, May 15**, to make your donation to Potlatch Fund and ensure an extra boost of support from The Seattle Foundation.

2013 Potlatch Fund Gala

An Evening of Celebration and Culture

You are cordially invited to join us as we celebrate over a decade of giving with the 11th Annual Potlatch Fund Gala on the evening of Saturday, November 2, 2013.

The Potlatch Fund Gala is more than a fundraising event to benefit Northwest Indian Country. It is an opportunity to raise the profile of the Native community, as a whole, and build relationships with Native leaders, Tribes, Native-led nonprofits and others invested in Indian Country.



[2012 Gala Video](#)

Current 2013 Gala Supporters

RAVEN

Lummi Nation
Nisqually Indian Tribe

HUMMINGBIRD

The Hugh & Jane Ferguson
Foundation
Squaxin Island Tribe

COMMUNITY PARTNER

Confederated Tribes of Grand
Ronde
Kalispel Tribe | Northern Quest
Resort and Casino
Samish Indian Nation
US Bank

TABLE HOSTS

The Russell Family Foundation

Participation at our Gala is critical to help us meet the needs of Northwest Indian Country. The Potlatch Fund Gala is true to its roots: money raised will be invested in Tribal communities and Native initiatives through our [Grantmaking](#) and [Capacity Building](#) programs.

Sponsorship of our 2013 Gala reaffirms your support for the important work Potlatch Fund conducts in partnership with Tribal communities and Native organizations throughout the Northwest.

In the spirit of the potlatch we ask for your support as we celebrate and honor the successes and leadership of Northwest Indian Country!

The Board and Staff of Potlatch Fund

[Sponsorship](#) - [Tables](#) - [Seats](#) - [Learn More](#)



Join the Potlatch Fund Team

Part-time Bookkeeper Position

Overview: This part-time position, with flexible hours, will report to the Executive Director and the Potlatch Fund Finance Committee.

Experience in fund accounting practices required with proven experience in nonprofit bookkeeping.

For the complete job description, [click here](#).

Closing Date: *Open Until Filled*

2013 Leadership Honoring Awards

Nominations for These Prestigious Awards NOW OPEN

The Potlatch Fund Annual Gala is Northwest Signature Event, which raises the profile of the Native community and highlights the innovative work being undertaken by Tribes and Native nonprofits.

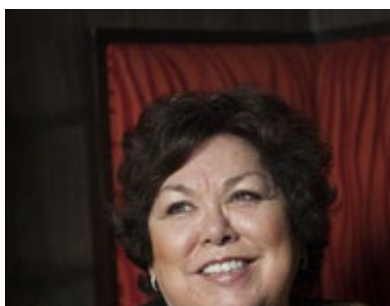
Since 2006, Potlatch Fund has honored Northwest Native leaders making a difference in the areas of: Economic and Community Development, Civic Participation, Natural Resource Protection, Education Award, and Cultural Preservation.

Nominations are reviewed annually and awardees are introduced during the [Potlatch Fund Gala](#), which for 2013 will be held on Saturday, November 2, at the Tulalip Resort.

To access the 2013 Nomination Form [click here](#).



[View the 2012 Leadership Honoring Video](#)





Julie Johnson, Sa'Leit'Sa, 2012
Leadership Honoring Awardee

To view the 2012 Leadership Honoring Awardees [click here](#).

To view a list of all Leadership Honoring Awardees [click here](#).

Nominations must be received by **EOB Friday, May 24, 2013**.
Only complete nomination packets will be accepted.



Quickly schedule monthly
donations with [Network for
Good](#) that fit your budget.

Your support of Potlatch Fund
will provide support to Native
projects making a difference
in Northwest Indian Country.

Your Opportunity to Make a Difference

You can help Potlatch Fund strengthen Tribal communities and Native organizations through contributions of your time, talent and treasure. Learn more about our mission and how to get involved on our website, or call: 206.624.6076.

[Become a supporter of Potlatch Fund today,
and make a difference for generations to come.](#)

All donations to Potlatch Fund are tax deductible:
EIN 73-1712905.

Follow



Learn



Watch



[Click to view this email in a browser](#)

If you no longer wish to receive these emails, please reply to this message with "Unsubscribe" in the subject line or simply click on the following link: [Unsubscribe](#)

Potlatch Fund
801 Second Avenue
Suite 304
Seattle, Washington 98104
US

