



# INSPIRING THE NATIVE TRADITION OF GIVING

# POTLATCH FUND



September 29, 2011



## 2011 Native Arts Grantees

Native American art, in the Northwest, has always played a central role in all facets of Tribal life. Artists are important educators and opinion leaders in Tribal communities. Through art, people learn to imagine other ways of seeing, doing, and interacting with each other and the environment.



*William Murphy - Oregon Coast  
Glassworks - one of the 22  
grantees for 2011*

Past Native Art grants have, among other things, funded

- traditional clothing classes
- the publication of books
- co-op projects
- the purchase of specialized equipment
- and the teaching of tradition art forms

For 2011 twenty two grantees in Washington, Oregon, Idaho and Montana are receiving a total of \$40,000 with funding from

- The Kalliopeia Foundation
- 2010 Gala Silent Auction Proceeds

[Click here](#) for the complete list of grantee.

## Philanthropists of the Year 2011 Potlatch Fund Annual Gala



*First Nations Development  
Institute is the largest  
American Indian economic  
rights organization based in  
the United States.*

**First Nations Development Institute** will be honored at our 2011 Gala, under the category of *National Native Foundation*.

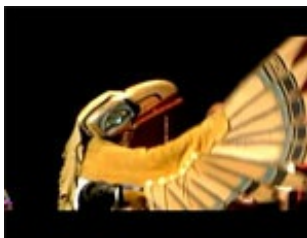
For more than thirty years, using a three-pronged strategy of educating grassroots practitioners, advocating for systemic change, and capitalizing Native communities, First Nations Development Institute is dedicated to strengthening Native American economies. First Nations serves rural and reservation-based Native communities throughout the United States.



History of the  
[Potlatch Fund logo](#)  
(Created by Natalie Charley,  
Quinault)



2011 Gala Image  
Revonna Joy Alamo  
(c) Adam Sings In The Timber



[2010 Gala Video](#)



## 2011 Annual Meeting

Potlatch Fund held its Annual Meeting on Tuesday, September 13, 2011. Officers were elected at the meeting as follow:

<i>President</i>	Kirby Jock, <i>Mohawk/Iroquois</i>
<i>Vice President</i>	Meredith Parker, <i>Makah</i>
<i>Treasurer</i>	Tim Otani
<i>Secretary</i>	Antone Minthorn, <i>Umatilla</i>
<i>Officer at Large</i>	Charlotte Coté, <i>Nuu-chah-nulth</i>

Potlatch Fund: [Call for a new Board Member](#)

## 2011 Potlatch Fund Annual Gala

The Potlatch Fund Gala is a community event that builds upon the giving tradition of the potlatch by bringing together Tribal and grassroots Native leaders, foundation and corporate representatives, our generous donors and community members. Our Gala is a unique opportunity to enjoy and learn about Native Culture, have fun, and support the important work Potlatch Fund undertakes throughout Northwest Indian Country.

Proceeds from the Potlatch Fund Gala directly support Northwest Indian Country in the form of technical assistance and grants to Native Artists, Native nonprofits (501-c-3), Tribes and Tribal nonprofits (7871). Support from our generous supporters has already ensured that the 2011 Potlatch Fund Gala will generate a surplus on the evening. Our hands go up to the following Tribes, foundations, corporations, individuals and supporters -

### Thunderbird

- \* Marguerite Casey Foundation
- \* Snoqualmie Tribe

### Eagle

- \* Bill & Melinda Gates Foundation
- \* Longhouse Media
- \* Lower Elwha Klallam Tribe
- \* Muckleshoot Indian Tribe

### Raven

- \* Bank of America
- \* Confederated Tribes of Siletz Indians
- \* Spirit Mountain Casino
- \* The Boeing Company
- \* Union Bank
- \* Wells Fargo

### Hummingbird

- \* DML Insurance Services, Inc.
- \* Elaine Nonneman



[2010 Leadership Video](#)

*Limited seats and sponsorship opportunities remain for this Northwest signature event.*

*Contact Lawrence Leake  
206.624.6076 x 13  
for details on how you can support Potlatch Fund through our 2011 Gala!*

- \* Lummi Nation
- \* Squaxin Island Tribe

**Community Partner**

- \* Kalispel Tribe of Indians
- \* NativeNorthwest.com
- \* Pride Foundation
- \* Social Justice Fund Northwest

**Table Host**

- \* Bryan Board Member, and Christine Mercier
- \* Chief Seattle Club
- \* Dana Arviso
- \* Heather Miller
- \* Jamestown S'Klallam Tribe
- \* John Chess, Board Member
- \* Kimberly Craven
- \* Kirby Jock, President & Heather Johnson-Jock, Board Member
- \* Meri Parker, Vice President
- \* Northwest Indian College
- \* Stephanie Coté and Darwyn FISHINGHAWK
- \* The Burke Museum of Natural History and Culture
- \* The Leake Family
- \* The Suquamish Tribe

---

**Capacity Building Calendar**

October 11, 12 - Bellingham, WA  
Journey to Successful Fundraising  
[Flyer](#) - [Registration](#)

October 18, 19 - Neah Bay, WA  
Journey to Successful Fundraising  
[Flyer](#) - [Registration](#)

Potlatch Fund needs your help as we currently plan our fall and winter schedules. We would love to come to your community and offer a capacity building training. If you are interested in helping bring a workshop to your area please [email](#) or call Heather at 206.624.6076 x12 to further discuss details.

---

**Strengthening Community through Philanthropy**

You can help Potlatch Fund strengthen Tribal communities and Native organizations through contributions of your time, talent and treasure. Learn more about our mission and how to get involved on our website, or call: 206.624.6076.



*Training participants practice their Elevator Speeches with Heather!*



Quickly schedule monthly donations with [Network for Good](#) that fit your budget.

*Your support of Potlatch Fund will provide support to Native projects making a difference*

[Become a supporter of Potlatch Fund today, and make a difference for generations to come.](#)

---

*in Northwest Indian Country.*

---

[Click to view this email in a browser](#)

If you no longer wish to receive these emails, please reply to this message with "Unsubscribe" in the subject line or simply click on the following link: [Unsubscribe](#)

---

Potlatch Fund  
801 Second Avenue  
Suite 304  
Seattle, Washington 98104  
US

