

INSPIRING THE NATIVE TRADITION OF GIVING

POTLATCH FUND



- August 26, 2014 -



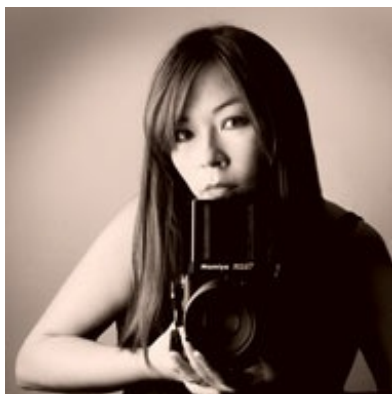
*Denise Juneau
Mandan and Hidatsa*

Denise Juneau - Leadership Honoring Awardee Patricia Whitefoot Education Award

Denise Juneau began her second term as Superintendent of Public Instruction on January 7, 2013.

Under her tenure, test scores are up and dropout rates are down. Her initiative, Graduation Matters Montana, has schools and communities working together to implement locally developed plans to keep more students in school. Additionally, the state has raised standards in English and Math and is providing more opportunity for students to access higher education.

Denise is the first American Indian woman to serve in a statewide elected office. She graduated from Browning High School in Browning, Montana. She earned her Bachelor's Degree in English from Montana State University; her Master of Education degree from the Harvard Graduate School of Education; and her Juris Doctorate from the University of Montana.



*Matika Wilbur
(Swinomish / Tulalip)*

Matika Wilbur - Project 562 2013 Native Arts Grantee Spotlight

Those who have been following Matika's Project 562 can fully understand why her timeless self-portrait, taken before 'selfies' were all the rage, adorns the left sidebar of this eNEWSletter: the task of choosing a single image, that embodies her journey, is simply not possible.

For just when one thinks they have found 'their' image, Makita releases a fresh set of photos. Photos in which she captures both the strength and resilience of the landscape and, more importantly, the spirit, pride, and sincerity of those who live in the 562 Native communities Makita will visit as she works to complete this ambitious project.

[Pacific Northwest Magazine](#)

[Project 562](#)
[Tacoma Art Museum](#)

[Artist's Website](#)

The Potlatch Fund Board and Staff raise their hands to Makita, 2013, 2009, and 2007 Native Arts Grantee, as she moves forward on her journey and graciously shares her experiences with all of us.

Experience **Project 562** for yourself:

[One The Road \(newsletter\)](#) | [Website](#) | [Blog](#)



John Edward Smith: Site Visit 2012 grantee and Native Arts Cohort participant

Potlatch Fund recently conducted a site visit with 2012 grantee and Native Arts Cohort participant, John Edward Smith as part of the an effort to build his capacity as an Native artist. A member of the Skokomish Tribe, John Edward Smith grew up on both the Makah and the Skokomish Indian reservations. He was influenced by many of the traditional carvers and weavers of both tribes. His family name is Tadelct. John works in multiple media and has produced a wide variety of art, including: canoes, paddles, prints, rattles, bailers, bentwood boxes, panels, gillnet hanging needles, baskets, hats, head bands, imprint concrete work, and silk screen designs.

Considered a master canoe maker, John is sought throughout the Pacific Northwest to make dug out and strip canoes for various tribes and canoe families. John was identified by the Squaxin Island Tribe as an artist to lead several carving workshops at Evergreen State College's Longhouse Education and Cultural Center in Olympia, WA. John has also led paddle making workshops for the Longhouse. John is widely respected as an artist and is called upon by his own tribe and many others for his work. John advocates for creating a system that supports Native fisherman in their seasonal work, so they can concentrate on their art during the off season.

Public Announcement - 2014 Annual Meeting Meeting of the Potlatch Fund Board of Directors



Potlatch Fund will hold its Annual Meeting on Tuesday, September 16, 2014.

The time and location of the Annual Meeting have yet to be



Maria Griffin (Spokane), Program Coordinator; Dana Arviso (Diné), Executive Director; and Charlotte Coté, PhD. (Nuu-chah-nulth), Board Vice President at Mithun.

confirmed. Kindly [eMail Potlatch Fund](#) to RSVP (by noon, Friday, September 12) for the meeting. Confirmation and meeting details will be provided by return eMail.

Thank you,
The Potlatch Fund Staff

List of Current Board Members may be found [here](#). Board Members are elected to three year terms with the Executive Committee elected during the Annual Meeting.



Quickly schedule monthly donations with [Network for Good](#) that fit your budget.

Become a supporter of Potlatch Fund today, and make a difference for generations to come.

Strengthening Community Through Philanthropy

Your Opportunity to Make a Difference

You can help Potlatch Fund strengthen Tribal communities and Native organizations through contributions of your time, talent, and treasure. Learn more about our mission, and how to get involved, by visiting our [website](#) or calling 206.624.6076.

[Make a donation today.](#)

All donations to Potlatch Fund are tax deductible: EIN 73-1712905.

Follow



Learn



Watch



[Click to view this email in a browser](#)

If you no longer wish to receive these emails, please reply to this message with "Unsubscribe" in the subject line or simply click on the following link: [Unsubscribe](#)

Potlatch Fund
801 Second Avenue
Suite 304
Seattle, Washington 98104
US

