

INSPIRING THE NATIVE TRADITION OF GIVING

POTLATCH FUND



- May 26, 2015 -



*Tachini Pete, Program Director
presenting at NAP's annual Native
Philanthropy Institute.*

The Importance of Staff attending Convenings

Potlatch Fund staff are committed to enhancing the organization's profile and promoting its mission. As such, staff are often asked to attend and present at conferences or convenings. These invitations and staff attendance is especially important as Potlatch Fund continues to grow.

Convenings offer meaningful outreach opportunities to promote and market Potlatch Fund's programming. In addition, convenings provide much needed knowledge and experience sharing time among peers and like minded organizations. Staff members have fostered significant relationships through convening opportunities and look forward to continuing this tradition. Potlatch Fund thanks the numerous organizations that bring Native people, and those engaged in Native philanthropy, together in a good way.



*Photo courtesy:
Peninsula Daily News.*

Board Vice President Meredith Parker captures the past and present of the Makah Tribe

Peninsula College Longhouse Photography Exhibition

The Longhouse art gallery, located at 1502 E. Lauridsen Blvd on the Port Angeles campus, is currently displaying the photography of Meredith Parker. Her passion for photography is evident in the manner in which she artfully captures the scenic beauty of her home lands.

Her images depict local and regional events, from the annual Canoe Journeys and Makah Days to weddings and other gatherings of family and friends. Meredith's artistic practice is something she has developed over decades on the North Olympic Peninsula. Her exhibition will be on display through August 2015. The gallery is free admission and open Tuesday and Thursdays from 1 p.m. to 4 p.m.



[Winter Sunset at](#)

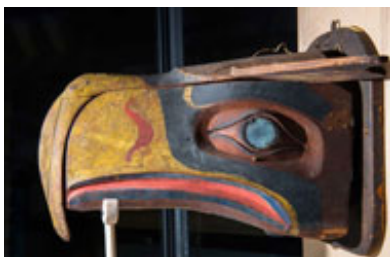
[Two-in-a-Canoe Rock](#)

(Neah Bay, WA).

We raise our hands in honour of Meredith Parker and her wonderful accomplishment. For more information about the Longhouse or to arrange a tour at an alternative time, email longhouse@pencol.edu or phone 360-417-7992.



Don't miss out on these opportunities to reconnect!



See the mask that inspired the Seahawks logo ([learn more](#)). Culture and tradition come alive at the [Burke Museum](#). Photo: Courtesy of the Hudson Museum.

Native Professionals and Friends Night

Upcoming Seattle Event: RSVP Today!

Potlatch Fund recognizes the importance of bringing people together to share our stories and experiences. Our intent is to generate deeper connections and conversations among Native professionals and our extended community.

All are welcome (this event is 21+) to attend and build relationships with the Native communities of Spokane and Seattle.

\$25.00 suggested donation will benefit Potlatch Fund and support the work we undertake in Northwest Indian Country.

SUMMER 2015

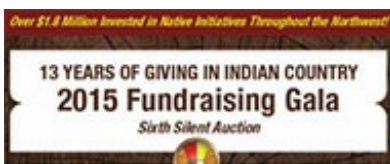
Co-hosted by Sealaska Corporation

Thursday, June 18 from 6:00 p.m. to 7:30 p.m.

Burke Museum of Natural History and Culture

17 Ave NE and NE 45th Street, Seattle, WA 98105

[Click here](#) to RSVP for this event.



The Northwest's signature event to expand philanthropy throughout Indian Country

*2015 Image Courtesy:
Matika Wilbur / Project 562*

2015 Fundraising Gala

Early Bird Pricing Ends Tuesday, September 30

Our Annual Fundraising Gala, a Northwest Signature Event, will be held on Saturday, November 7. The Gala raises the profile of the Native community and highlights the innovative work being undertaken by Tribes and Native nonprofits.

\$125 per seat if purchased before Tuesday, September 30, 2015.

\$150 per seat if purchased after the deadline.

Gala attendees can enjoy:

- » Pre and post dinner networking receptions
- » Native art silent auction
- » Dinner celebrating traditional and local foods
- » Cultural performances
- » Presentation of the Leadership Honoring Awards
- » Presentation of the Philanthropist of the Year Award
- » Presentation of the Social Innovation Award



Purchase your seats **today** to ensure **Early Bird pricing** and

Get your seats now via [PayPal](#) or [registration form](#)

And remember to
at the [book your room!](#)

availability via [PayPal](#) or complete the [registration form](#).

[Sponsorship](#) and [Table Host](#) opportunities are also available.



Quickly schedule monthly donations with [Network for Good](#) that fit your budget.

Become a supporter of
Potlatch Fund today,
and make a difference
for generations to come.

Strengthening Community Through Philanthropy Your Opportunity to Make a Difference

You can help Potlatch Fund strengthen Tribal communities and Native organizations through contributions of your time, talent, and treasure. Learn more about our mission, and how to get involved, by visiting our [website](#) or calling 206.624.6076.

[Make a donation today.](#)

All donations to Potlatch Fund are tax deductible: EIN 73-1712905.

Follow



Learn



Watch



[Click to view this email in a browser](#)

If you no longer wish to receive these emails, please reply to this message with "Unsubscribe" in the subject line or simply click on the following link: [Unsubscribe](#)

Potlatch Fund
801 Second Avenue
Suite 304
Seattle, Washington 98104
US

