



INSPIRING THE NATIVE TRADITION OF GIVING

# POTLATCH FUND



April 11, 2012



## 10 Days of Giving

**The WK Kellogg Foundation will match the first \$20,000**



*Our rich traditions live on every day through the work we do*

—  
Capacity Building  
Leadership Development  
Funder Education  
Grantmaking Program  
—

From April 17th through April 26th, our community will come together for W.K. Kellogg Foundation's Cultures of Giving Donor Challenge. We need YOU to join us for 10 days of unprecedented giving — and your chance to make a real difference, right here in Northwest Indian Country.

We need you to help us with these three things:

1. Mark April 17-26th on your calendar and add this [link](#).
2. Follow us on [facebook](#) and help build the buzz.
3. Spread the word! Forward this email to your family and friends along with a personal note as to why you believe in our work, and why they should give during April 17th through April 26th.

Help spread the excitement. Tell your friends and family why you think they should help us, support Native initiatives, with their donations. Please be our champion — we cannot wait to celebrate the difference your generosity will make!

In the spirit of the potlatch,

Dana Arviso (Diné)  
Executive Director

## What is a Potlatch?

Historically and to present day, Northwest Native people gather in celebration where wealth in the form of gifts, knowledge, traditional





The Potlatch Fund Logo

[Discover its Meaning!](#)



Your support of Potlatch Fund will provide support to Native projects making a difference in Northwest Indian Country.



(c) Joseph Seymour,  
Squaxin Island Tribe

food and dance is shared and redistributed. Ceremonies take place commemorating a variety of events such as births, name giving or marriage. With the vast cultural and geographical diversity of the northwest, ways in which potlatches (sometimes referred to as giveaways) are practiced also reflects the multiplicity of cultures of the Pacific Northwest – extending north into Canada and Alaska. For some examples of potlatches, please follow this [link](#).

### Your Opportunity to Make a Difference

You can help Potlatch Fund strengthen Tribal communities and Native organizations through contributions of your time, talent and treasure. Learn more about our mission and how to get involved on our website, or call: 206.624.6076.

[Wait until April 17 - and have your gift matched during the 10 days of giving campaign!](#)

All donations to Potlatch Fund are tax deductible: EIN 73-1712905.

### Final Landing 2012 - Paddle to Squaxin Save the Date: Sunday, July 29

On Sunday, July 29, Potlatch Fund will travel to Olympia to witness the final landing of the 2012 InterTribal Canoe Journey. We offer these funder tours to introduce individuals to both the successes and challenges faced by Tribal communities and aim to intentionally show the diverse nature of the Tribal communities and Native organizations that comprise Northwest Indian Country. If you would like to participate in this funders tour to Tribal communities of southern Puget Sound, kindly email [Lawrence](#).

### 2012 Calendar of Events

#### Community Building Grant Cycle

[DOWNLOAD the application here.](#)

Application postmark date: Friday, April 13

#### NICWA Conference

Scottsdale AZ

April 22 - 24, 2012 <[information](#)>

#### Native Philanthropy Institute

Los Angeles CA

April 25 - 27, 2012 <[information](#)>

#### EPIP National Conference

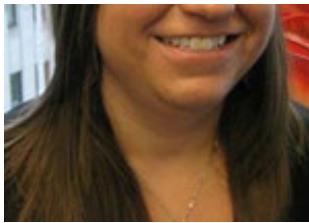
Plenary Session: [Emerging as an Executive Director](#)

Los Angeles CA

April 27, 2012 <[information](#)>

#### Council on Foundations





Heather Miller, Wyandotte,  
Program Coordinator

*If you are interested in helping  
bring a workshop to your area  
please [email](#) or call Heather at  
206.624.6076 x12 to further  
discuss details.*

D5 Coalition Panel: [We Are Philanthropy](#)  
Los Angeles CA  
April 30, 2012 <[information](#)>

#### **Communication Plan Training**

Seattle WA  
May 17, 2012

Please email [Heather](#) to RSVP for this specialized training co-  
presented with [Pyramid Communications](#).

#### **ATNI Mid-Year Conference**

Siletz OR  
May 21 - 24, 2012 <[register online](#)>

#### **Native Arts Grant Cycle**

RFP posted: Monday June 4  
Application postmark date: Friday, July 13

#### **Potlatch Fund Tenth Annual Gala**

Saturday, November 3 - Tulalip Resort

[Raven Sponsors: Nisqually Tribe, Union Bank](#)

[Hummingbird Sponsor: Squaxin Island Tribe](#)

[Community Partner: Kalispel Tribe of Indians](#)

---

[Click to view this email in a browser](#)

If you no longer wish to receive these emails, please reply to this message with "Unsubscribe" in the subject line or simply click on the following link: [Unsubscribe](#)

Potlatch Fund  
801 Second Avenue  
Suite 304  
Seattle, Washington 98104  
US

